

KCAP ARCHITECTS URB PLANNERS

Large development and transformation areas,
a multi-disciplinary, design-led approach.

Ir. Jeroen Dirckx

International Conference on Urban Development
Prague, 11.04.2013



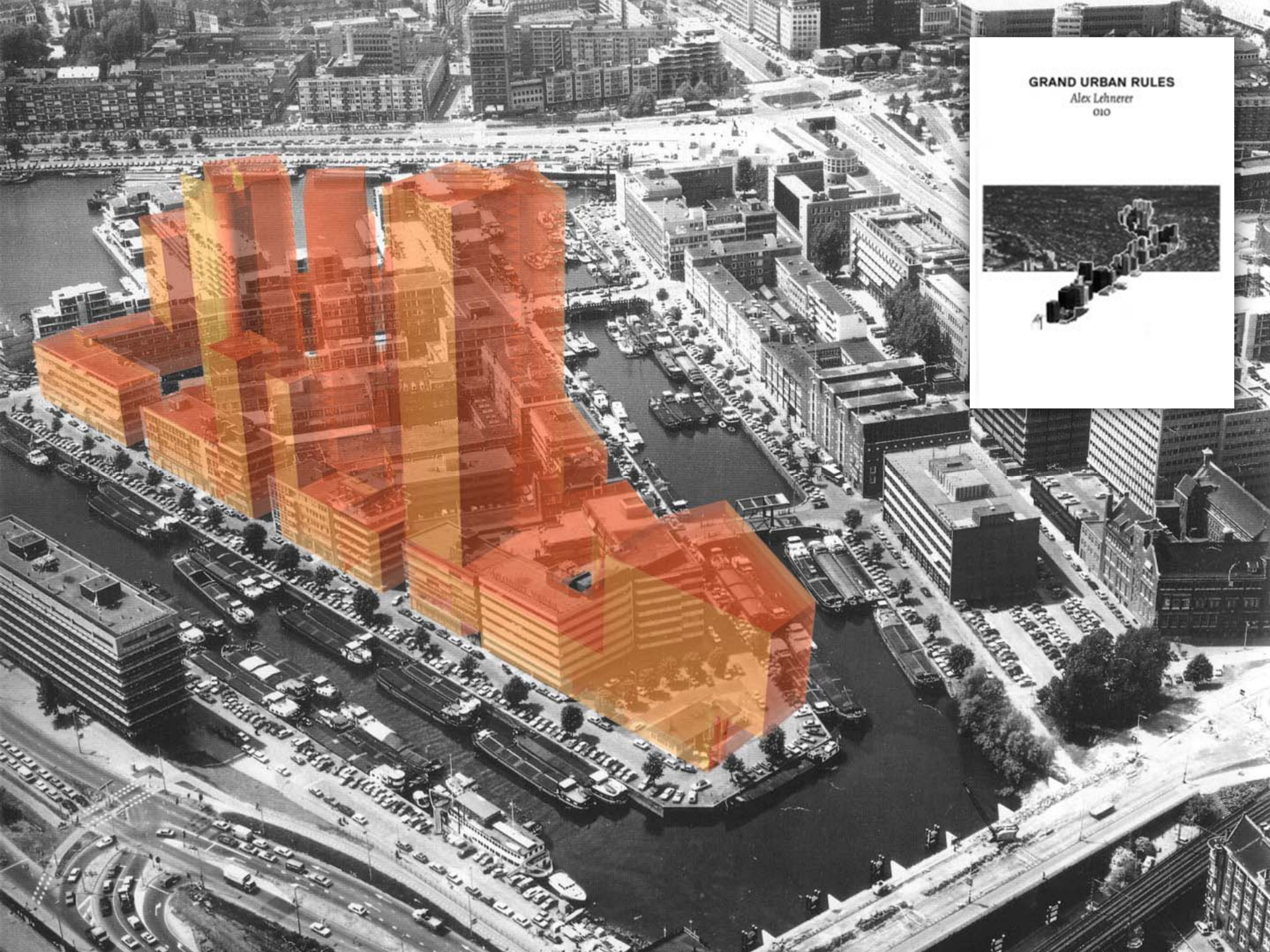
**CITY
AS
LOFT**

Adaptive reuse
as a blueprint for
sustainable urban
development

Martine Baat
Kees Christiaanse
[eds.]

John Wiley

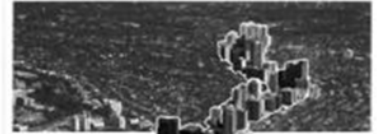




GRAND URBAN RULES

Alex Lehnerer

010



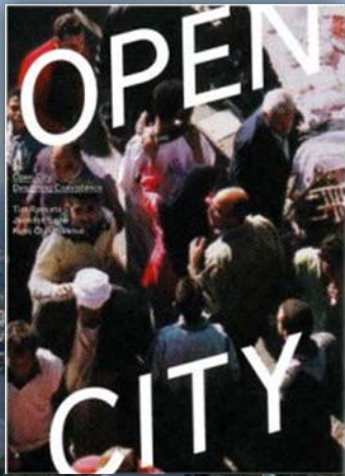


The Red Apple
and Wijnhaven
Island

De Red Apple
en het Wijnhaven
Eiland

Paul
van
der
Vliet

010



Edited by Kerstin Hoeger and Kees Christiaanse

Campus and the City

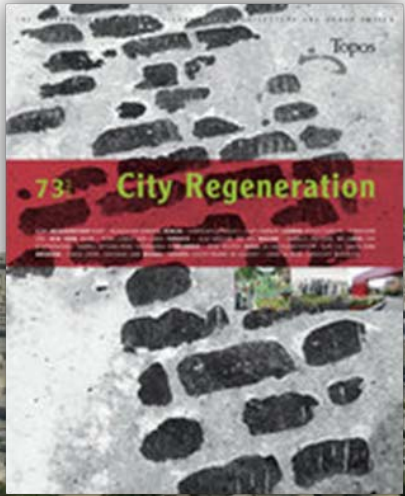
Urban Design for the Knowledge Society

With contributions by

Edzo Birkels
Kees Christiaanse
Janne Covert
Andrea DePalmas
Gunter Henn
Kerstin Hoeger
Edo Hoffland
Vittorio Magnago Lampugnani
Wilhelm Nättrup
Wolfgang Oechslin
Philip Parsons
Gerhard Schmitt
Remo Spinnmeier
Zhu Weiyl
Eiken Yamamoto
Ari Zaaijer

gta Verlag





Large development and transformation areas.

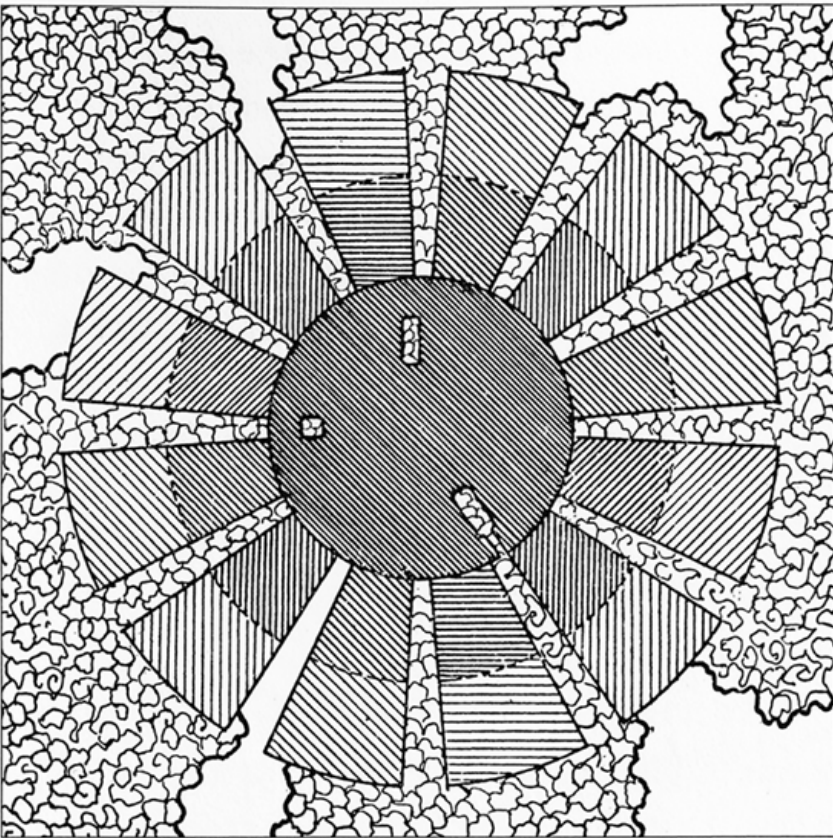
- Framework planning
- Multi-disciplinary approach

How Our Greatest Invention Makes Us Richer,
Smarter, Greener, Healthier and Happier

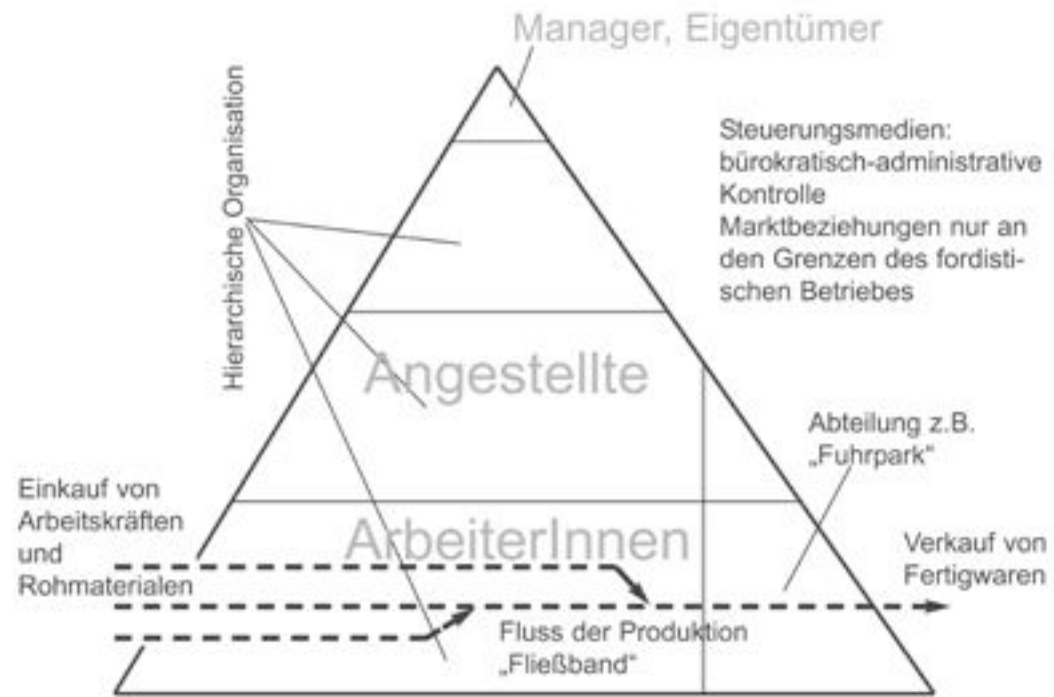
TRIUMPH OF THE CITY

EDWARD L.
GLAESER





Fordismus



PROGRAMMATIC ZONING VS OVERLAP

OLD MODEL
GOVERNMENT DRIVES ECONOMIC DEVELOPMENT
THROUGH POLICY DECISIONS AND INCENTIVES



NEW MODEL
COLLABORATIVE PROCESS INVOLVING
GOVERNMENT AT MULTIPLE LEVELS, COMPANIES,
TEACHING AND RESEARCH INSTITUTIONS, AND
INSTITUTIONS FOR COLLABORATION



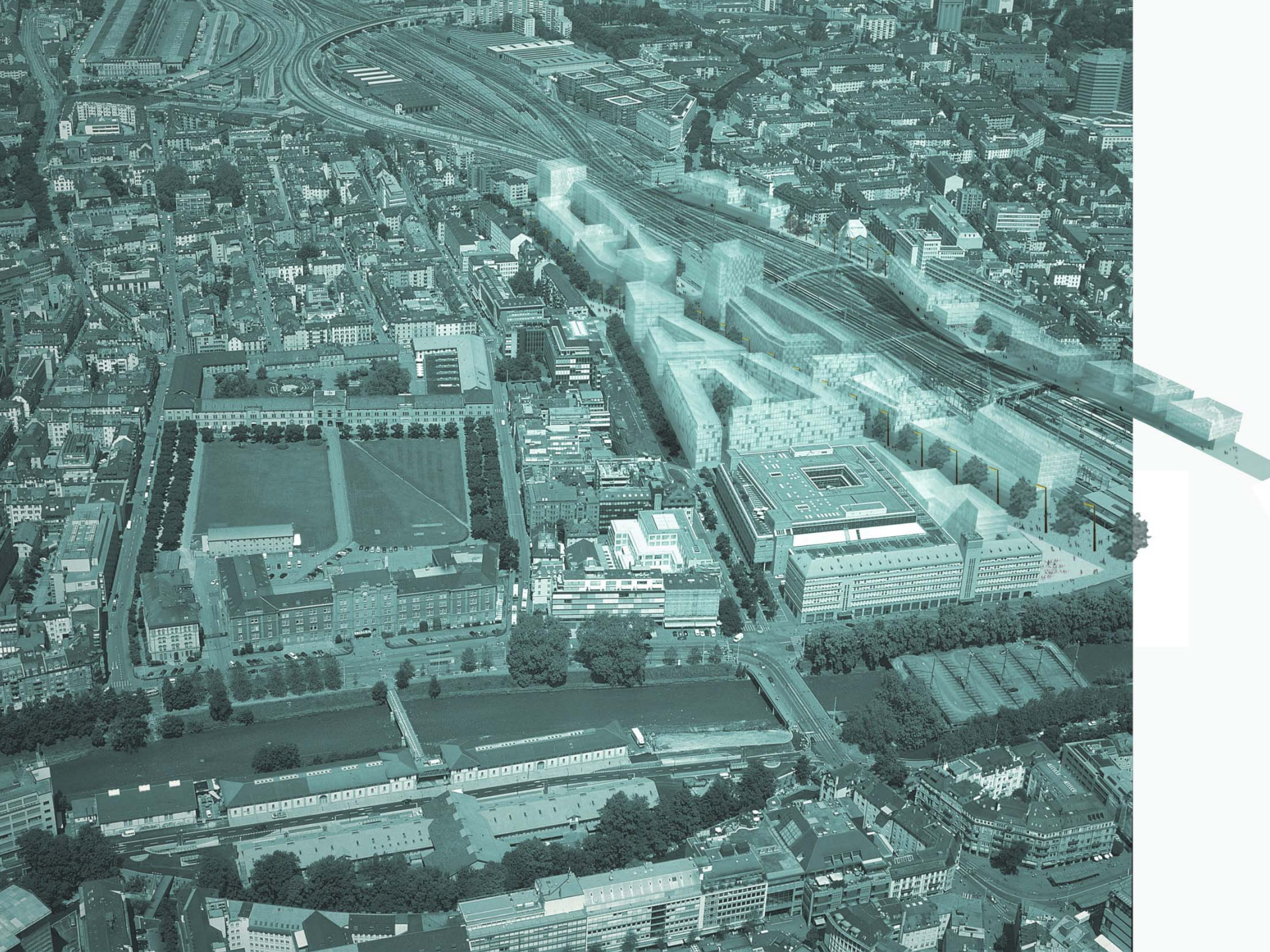
PROGRAMMATIC ZONING
项目分区



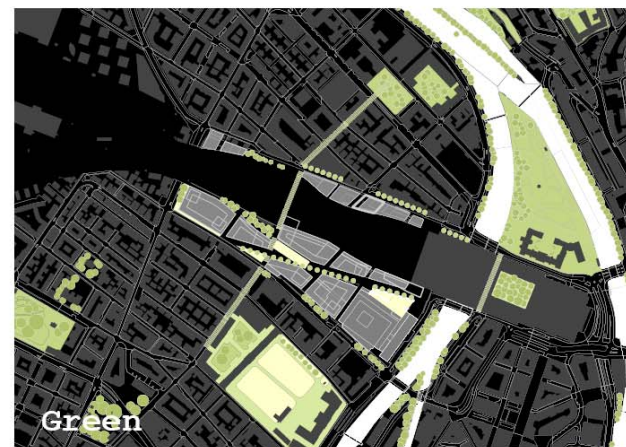
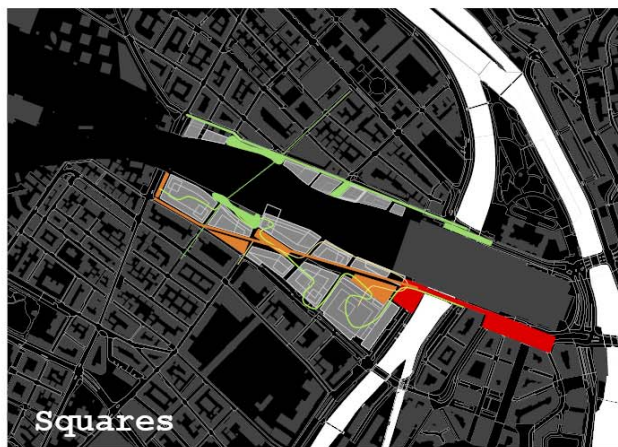
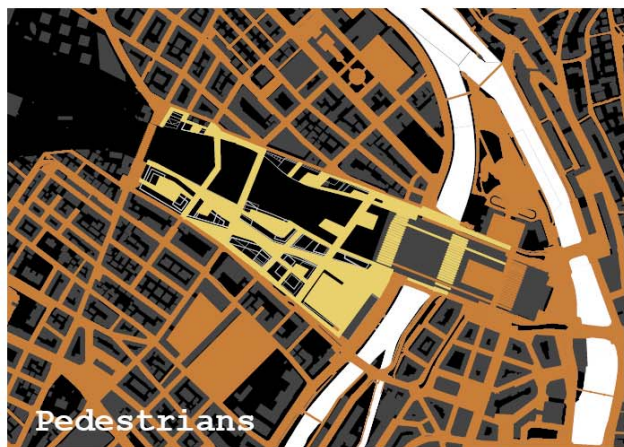
URBAN CLUSTERS
城市组团

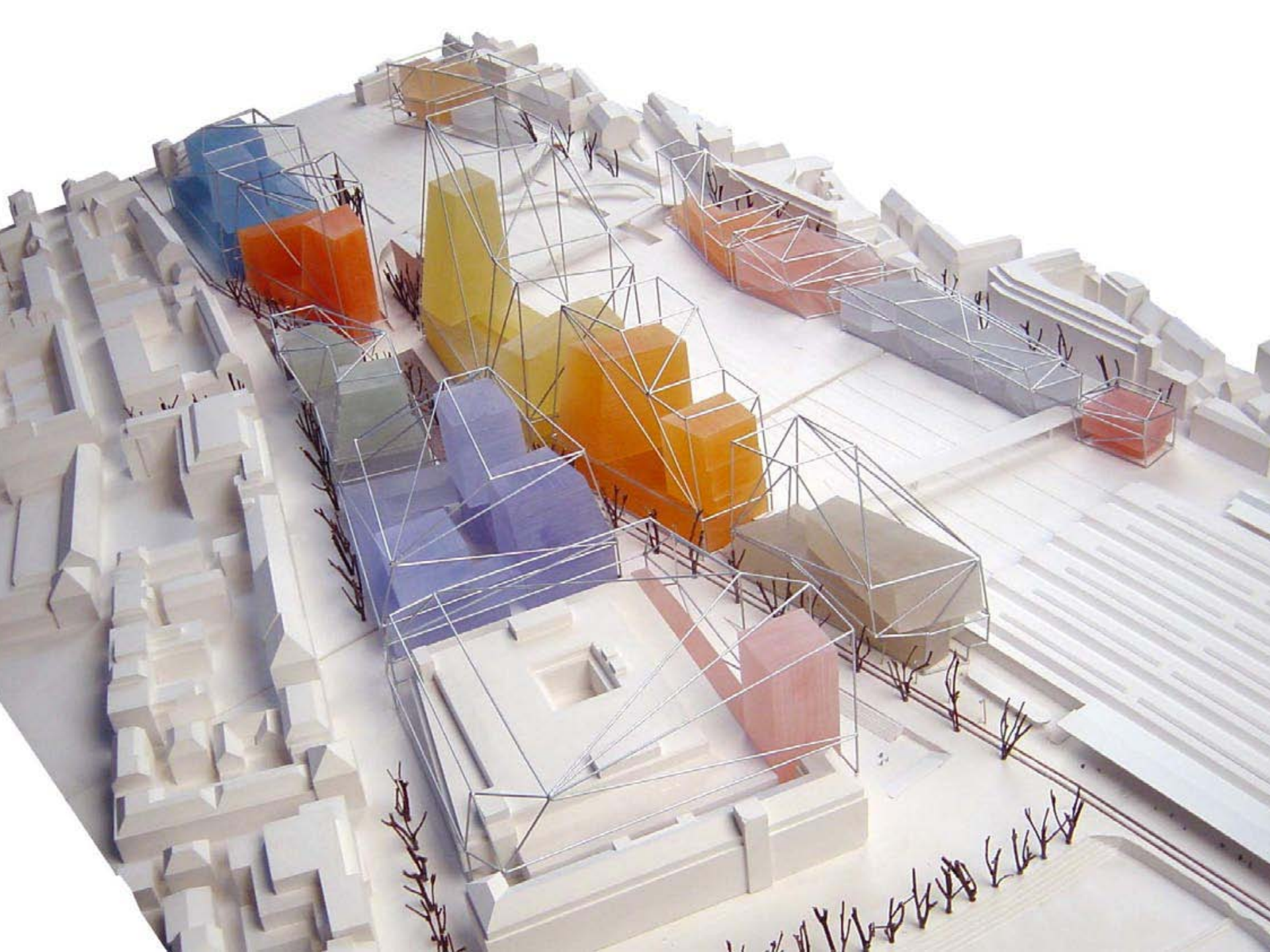
EUROPAALLEE
CENTRAL STATION ZURICH

Swiss





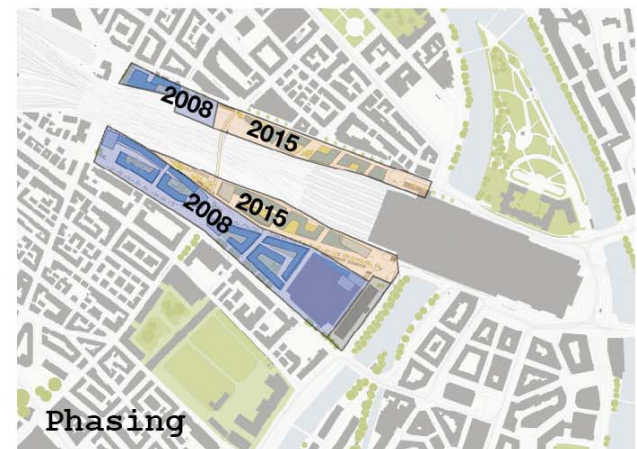
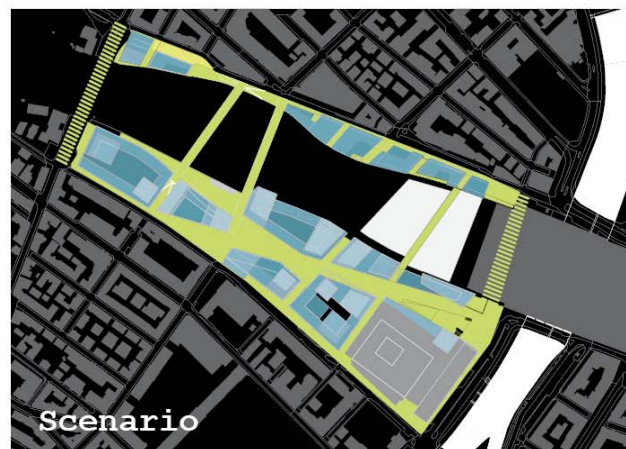
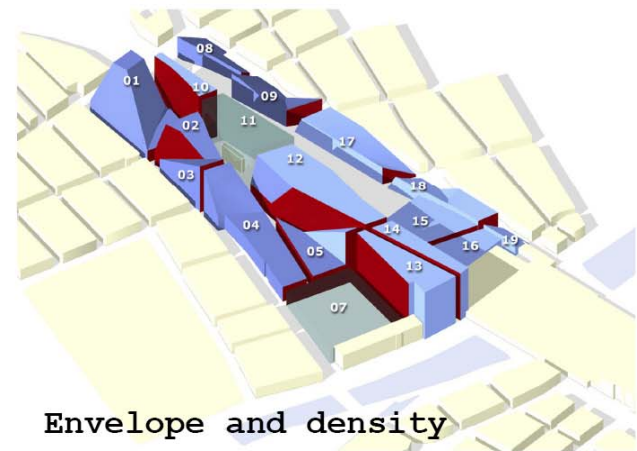
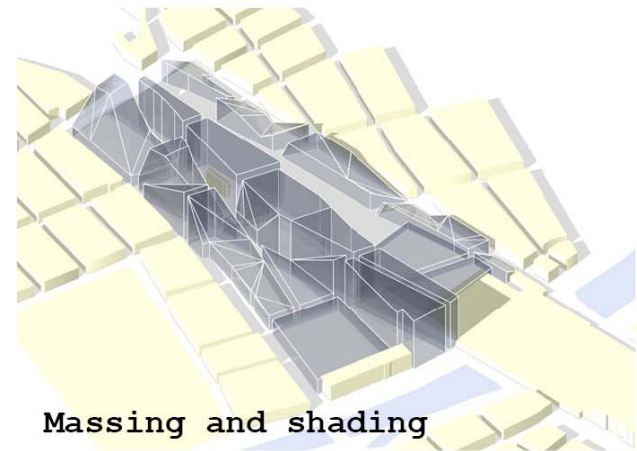
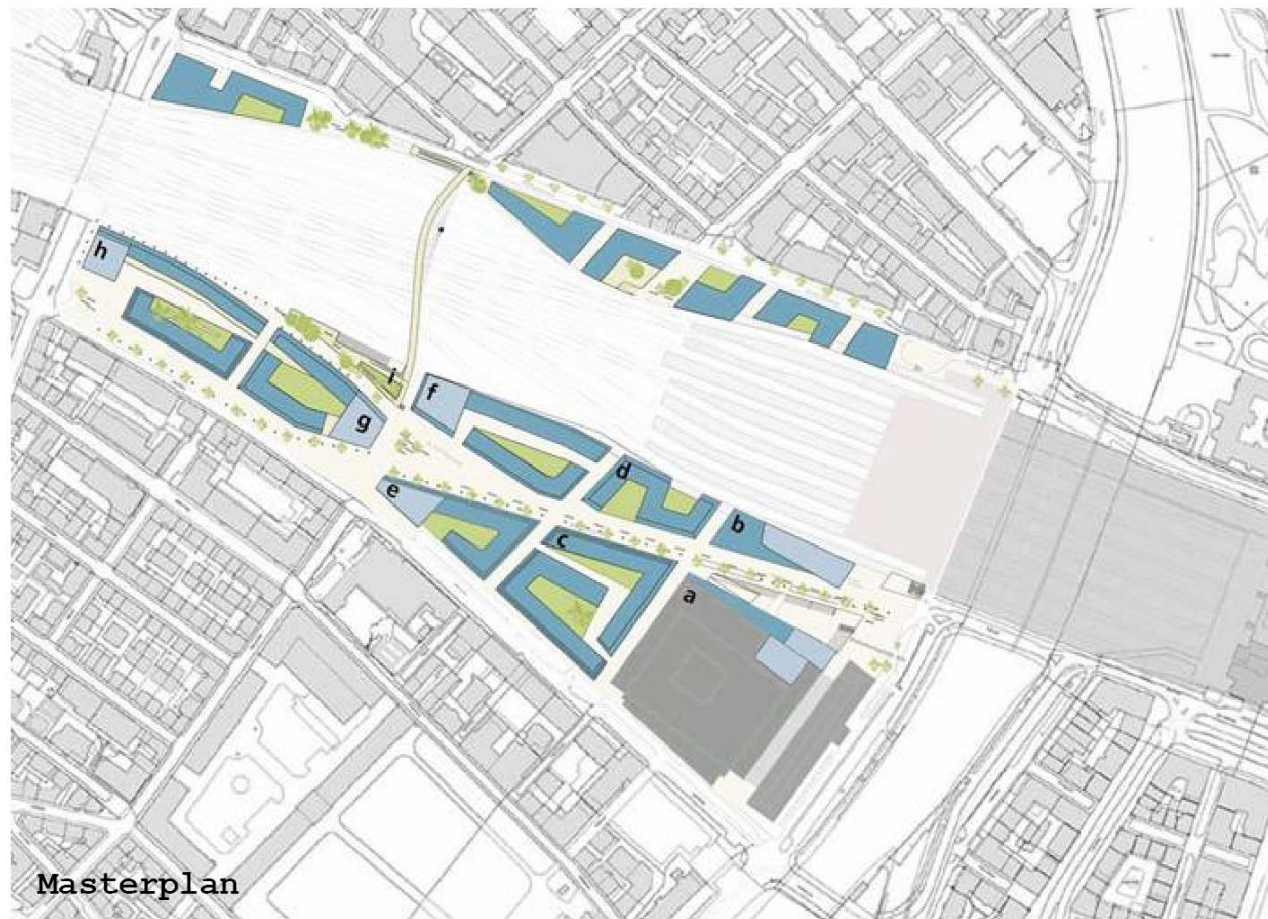














Neuplanung Umfeld HB Zürich

workshop 28-11-03

KCAP ARCHITECTS & PLANNERS, PIEKSTRAAT 27, POSTBUS 50528, 3007 JA ROTTERDAM










FREDERICIA C

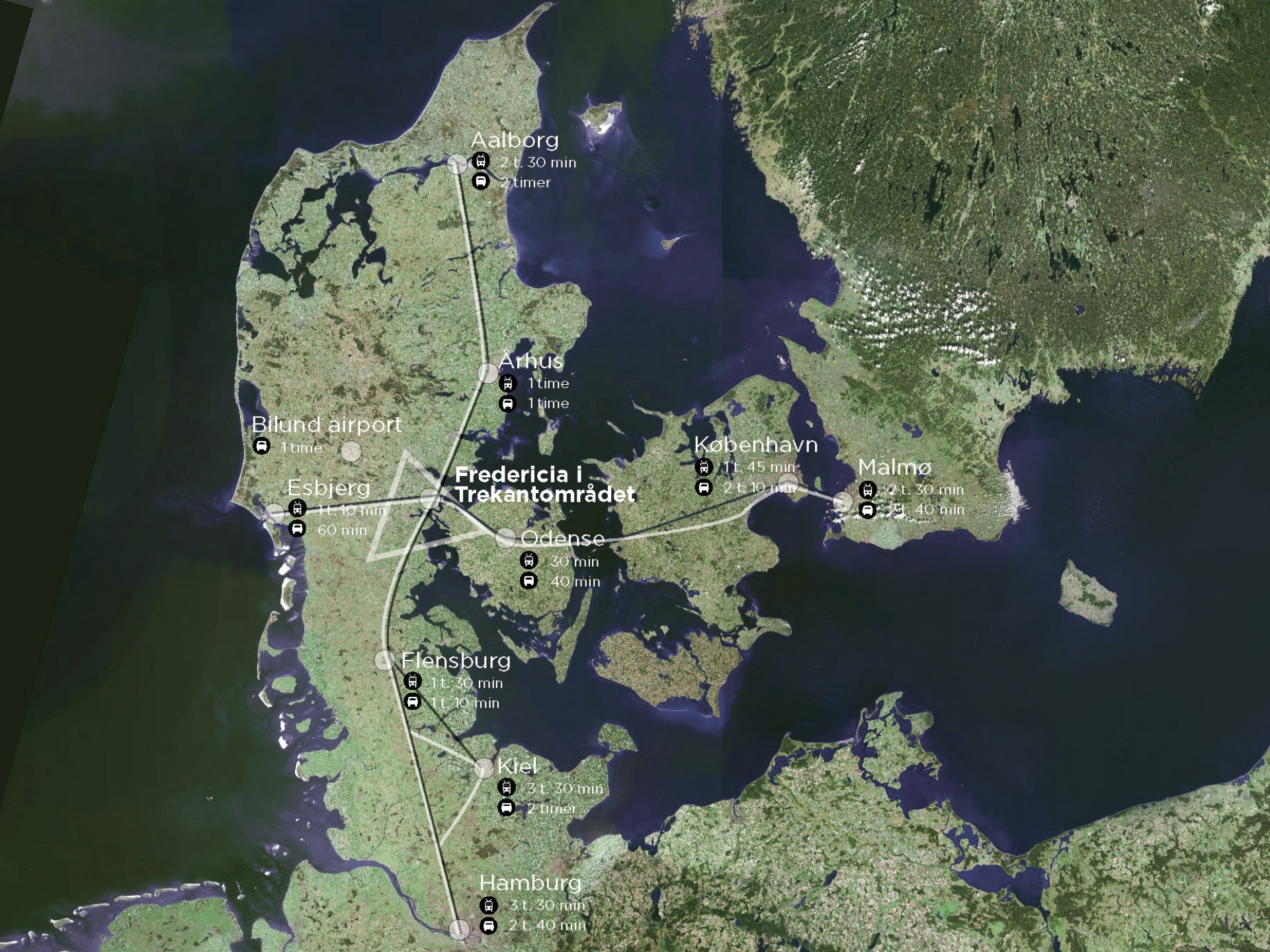
Denemarken

FredericiaC DEVELOPMENT PLAN

The Canal Town by Lillebælt strait



Approx. 21 hectare
Approx. 265,000 m² building area
Approx. 1,000 dwellings
Approx. 2,800 jobs



Aalborg

2 t. 30 min
2 timer

Århus

1 time
1 time

Bilund airport

1 time

Esbjerg

1 t. 10 min
60 min

Fredericia i
Trekantområdet

København

1 t. 45 min
2 t. 10 min

Malmø

2 t. 30 min
2 t. 40 min

Odense

30 min
40 min

Flensburg

1 t. 30 min
1 t. 10 min

Kiel

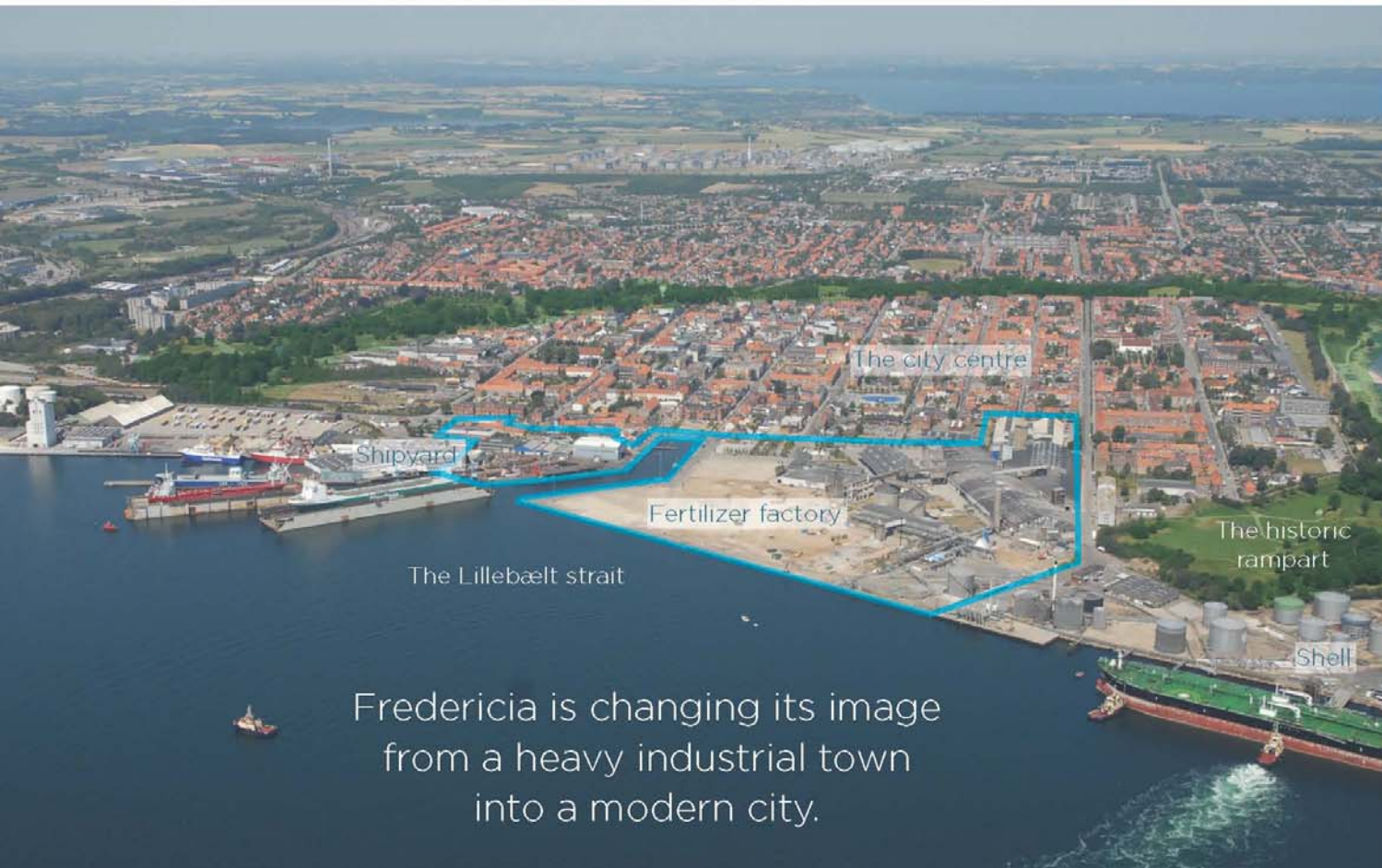
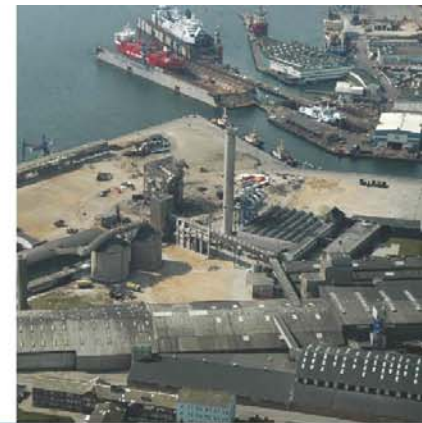
3 t. 30 min
2 timer

Hamburg

3 t. 30 min
2 t. 40 min

THE PROJECT AREA

The urban plan for FredericiaC is a development strategy for a 21 ha brownfield site at the seafront of Fredericia, which will expand the inner city by 25%.



Fredericia is changing its image from a heavy industrial town into a modern city.

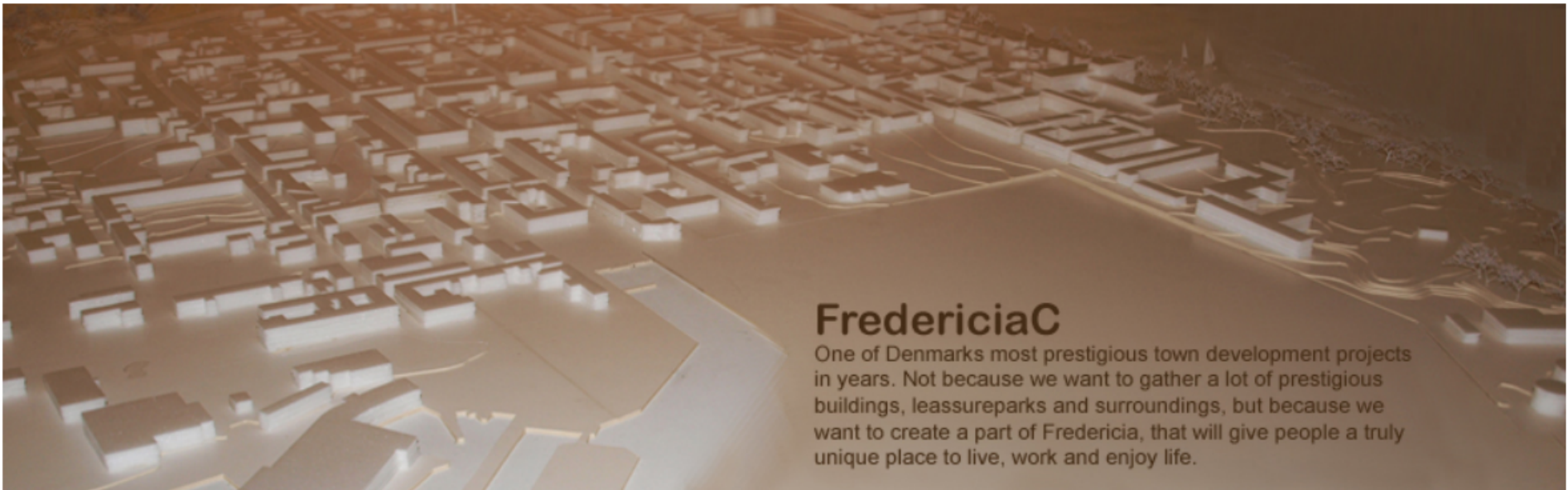




FredericiaC = Public Private Partnership between Fredericia Municipality and Realdania By

- Forside
- Udviklingsplan
- Aktiviteter
- Projektet
- Organisation
- Dialog
- Konkurrence

FredericiaC Parallel competition



FredericiaC
 One of Denmark's most prestigious town development projects in years. Not because we want to gather a lot of prestigious buildings, leisure parks and surroundings, but because we want to create a part of Fredericia, that will give people a truly unique place to live, work and enjoy life.



Team proposals

The final four teams have submitted their final proposals. You can download the four teams' final proposals here.

► Read more



Parallel competition

FredericiaC has organized a parallel completion. You can read more about the background for this type of competition, the jury report and more here

Read more



Competition Brief

The Competition Brief is now ready for download in English

- See the Competition Brief here
- See the Background Material here
- See the Process tool and note on economy - January 2011 here



FredericiaC

A prestigious town development for all the right reasons

► Read more



PARTICIPATORY DEVELOPMENT

Public participation and cocreation are well integrated into the project. The plan sets out a flexible phasing strategy with short term interventions and temporary events to promote the site. A key driver is local urban agriculture.



Public participation for the younger inhabitants



Cocreation of FredericiaC.



Inhabitants participate.

International competition

- **Extensive Brief**
- **Workshops**
- **Dialogue**



Competition:

Team KCAP

RAMBOLL:

- Engineering
- Traffic
- Parking
- Sustainable Energy
- Soil contamination
- Hazards
- Costing

KCAP:

- Project management
- Strategy
- Urban Design
- Landscape
- Architecture
- Process

FAKTON:

- Plan Economy
- Market Strategy

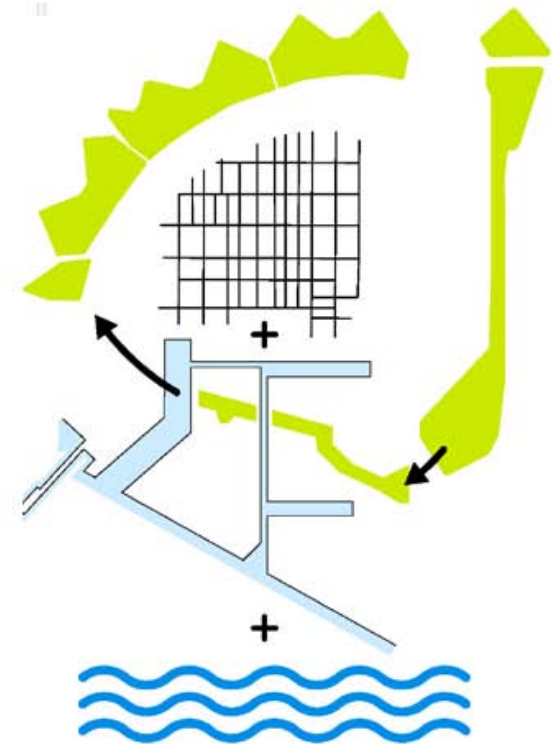
Multi-disciplinary approach

A HOLISTIC APPROACH

The public space framework brings the renaissance street grid, the historical rampart and the sea together in one comprehensive environment.



The streetgrid with sightlines towards the sea is enhanced.



The canals were previously envisioned in historic designs for the garrison town but were never realized. They set conditions for an intensive interaction between the existing city, the new buildings and the water and offers an appealing overarching maritime character.



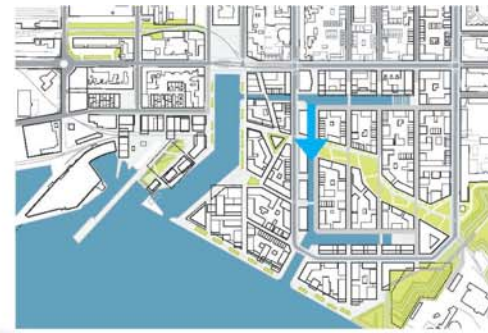
Envisioned canals on a historic design.



Impression of the new north canal, illustrating active use of the water and continuous pedestrian promenades along the quays.



The existing seafront will be enriched by a network of canals, offering a strong presence of water into the city.



Impression of the canals running north south along Palazzo buildings at the crossing of the bridge which connects Karolinelunden with the retail area. The buildings and the public pocket squares connect to the water.

The image is a detailed architectural site plan for the Fredericia C Development Plan. It features a complex grid of streets and building footprints. A prominent blue waterway, likely a canal or harbor, runs through the center-left of the plan. To the right, there is a large green area with various landscaping elements, including trees and paths. The plan uses a color-coded system: white for building footprints, green for parks and green spaces, blue for water, and purple/pink for specific zones or paths. The overall layout is dense and organized, showing a mix of residential and commercial spaces.

THE FredericiaC DEVELOPMENT PLAN

Sequences and variation of spaces inspire dynamic and diverse public spaces as well as activity and recreation.

IN TUNE WITH THE HISTORY

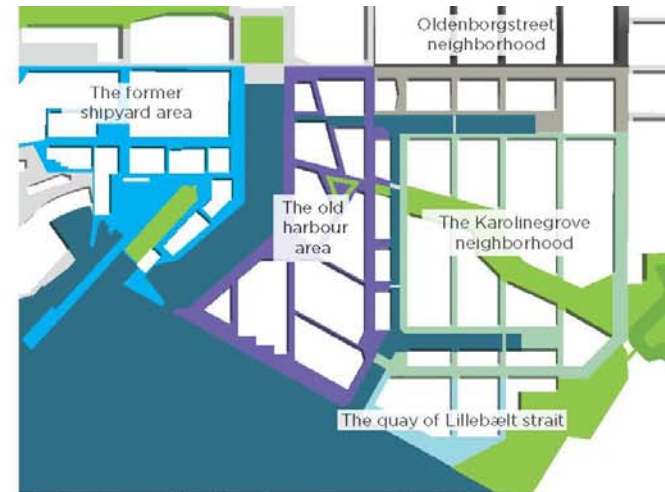
With respect to the city's scale and history, the development strategy sets out a robust framework, with a sensitive network of public space.



Building heights in the historic town.

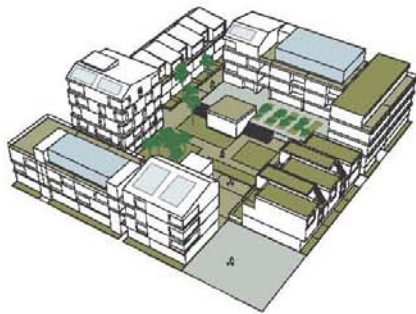


The areas planning principles dictate a varied mix of different uses, urban typologies and architectures. Within these principles, the urban development is highly adaptable to any future changes that might affect the development process.

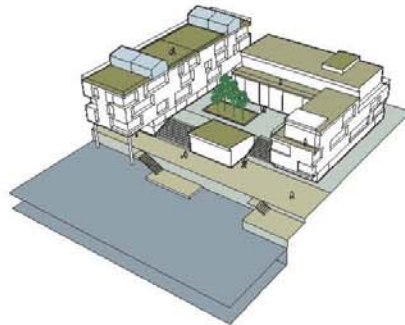


Overlapping neighborhoods create a variation in the city.

Examples of block typologies



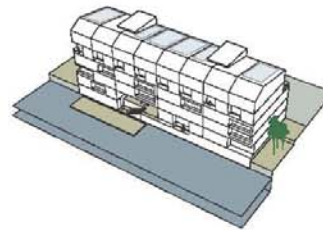
Open block



U-shaped block with raised courtyard



Block with programming on the ground floor and raised courtyard



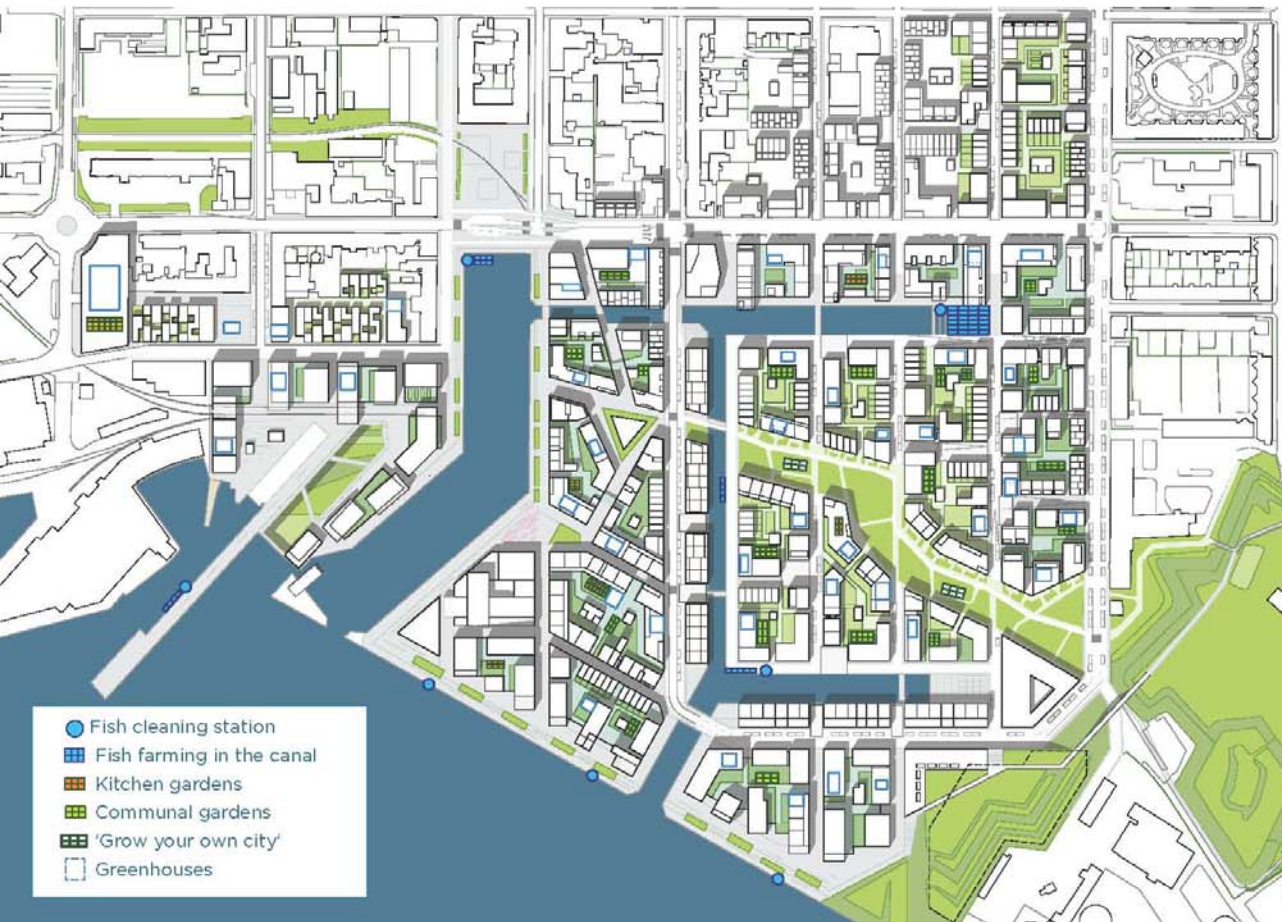
Palazzo building by the canal

AN ORGANIC FOOD STRATEGY

Local food production has potential as a major catalyst for the urban development. It promotes health and social coherence.



Grow your city workshop 2012



Opportunities are created in the physical plan for local growing of food in community gardens, in kitchen gardens, in courtyards, on walls, on roofs or in public spaces and parks.



Impression of the Karolinelund park, illustrating a community garden and active use of the park by the adjacent houses and school.



Project:

Team KCAP

RAMBOLL:

- Engineering
- Traffic
- Parking
- Hazards
- Wind modelling
- Costing

ESBENSEN:

- Sustainable Energy
- Sun and daylight

GRONTMIJ:

- Soil contamination

KCAP:

- Project management
- Strategy
- Urban Design
- Architecture
- Process

VANDKUNSTEN:

- Danish expertise
- Urban Design
- Architecture

SLA:

- Landscape arch.

FAKTON:

- Plan Economy
- Market Strategy
- Parking

ARUP:

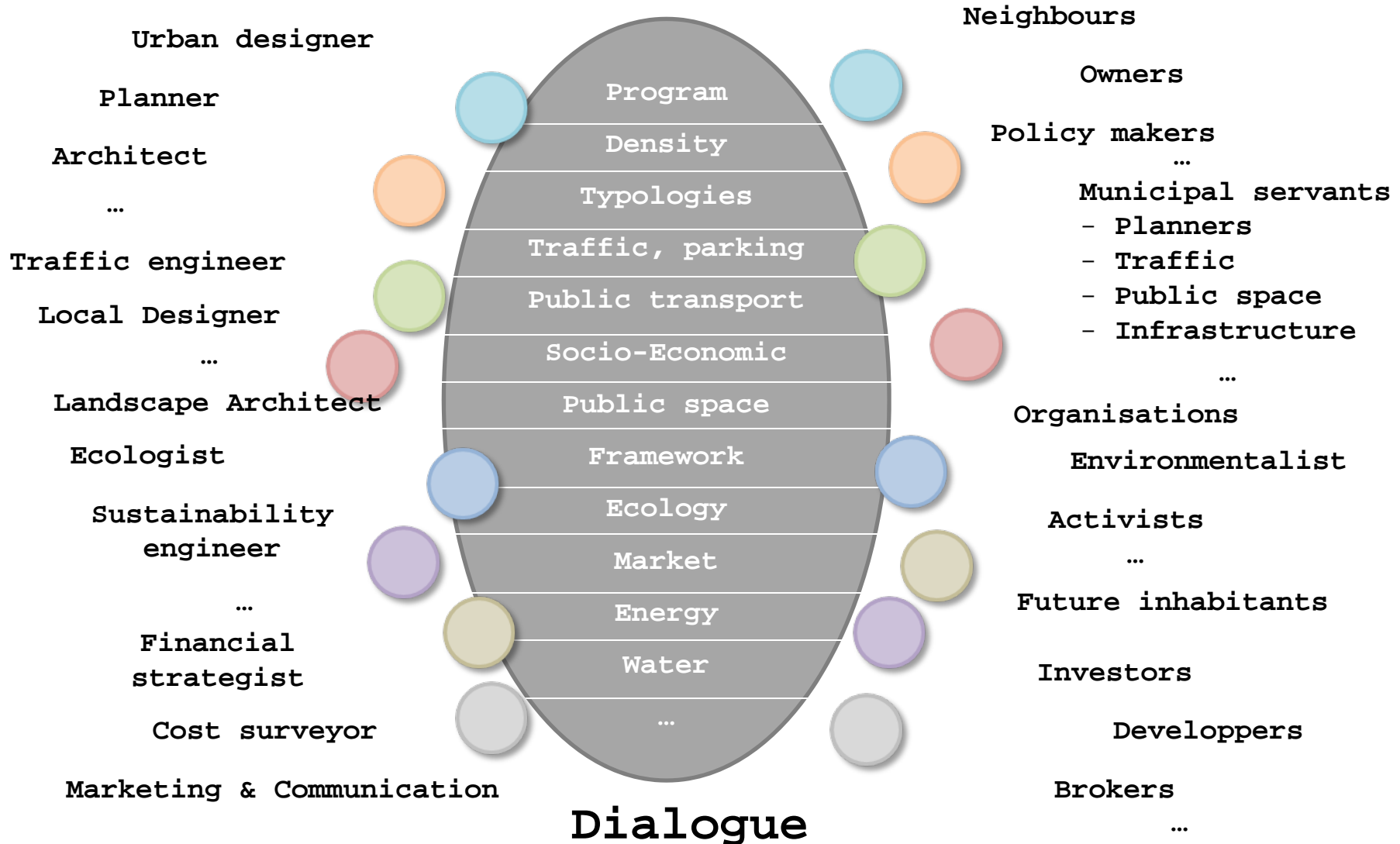
- Urban farming
- Behavioural sustainability
- Program strategy

Multi-disciplinary approach

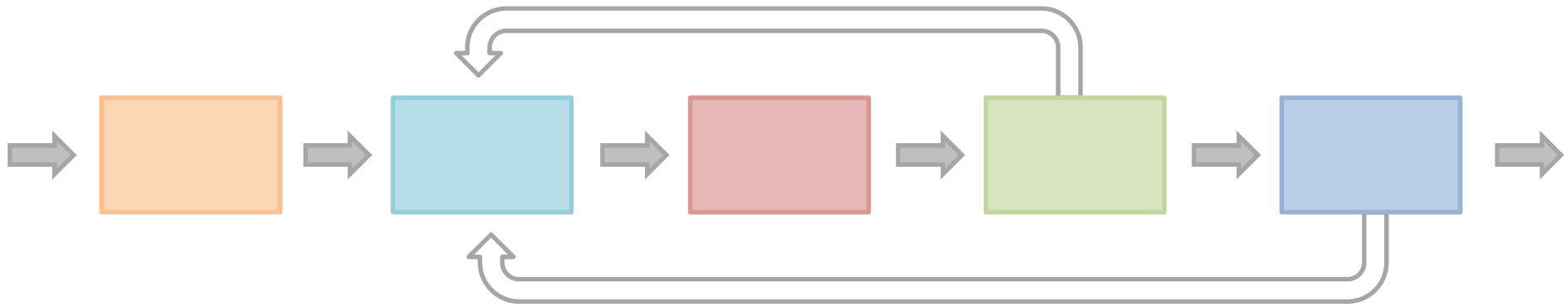
Design team

Stakeholders

Strategies

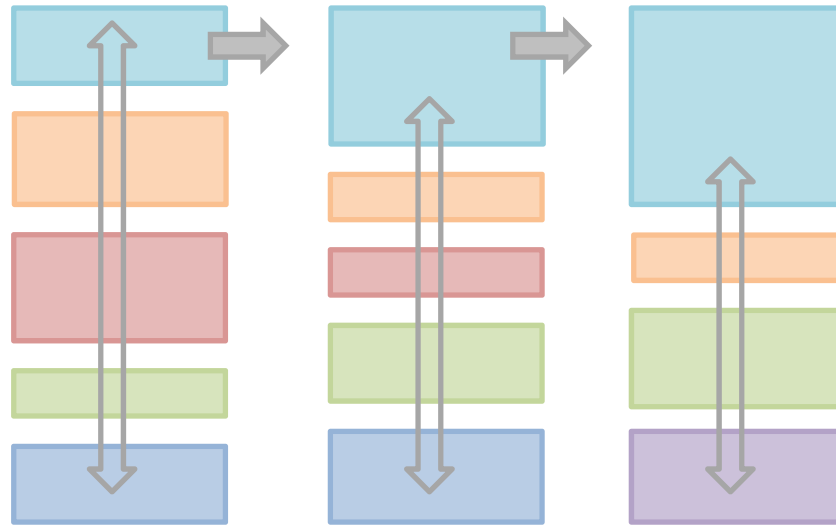


Sequential model



Old school

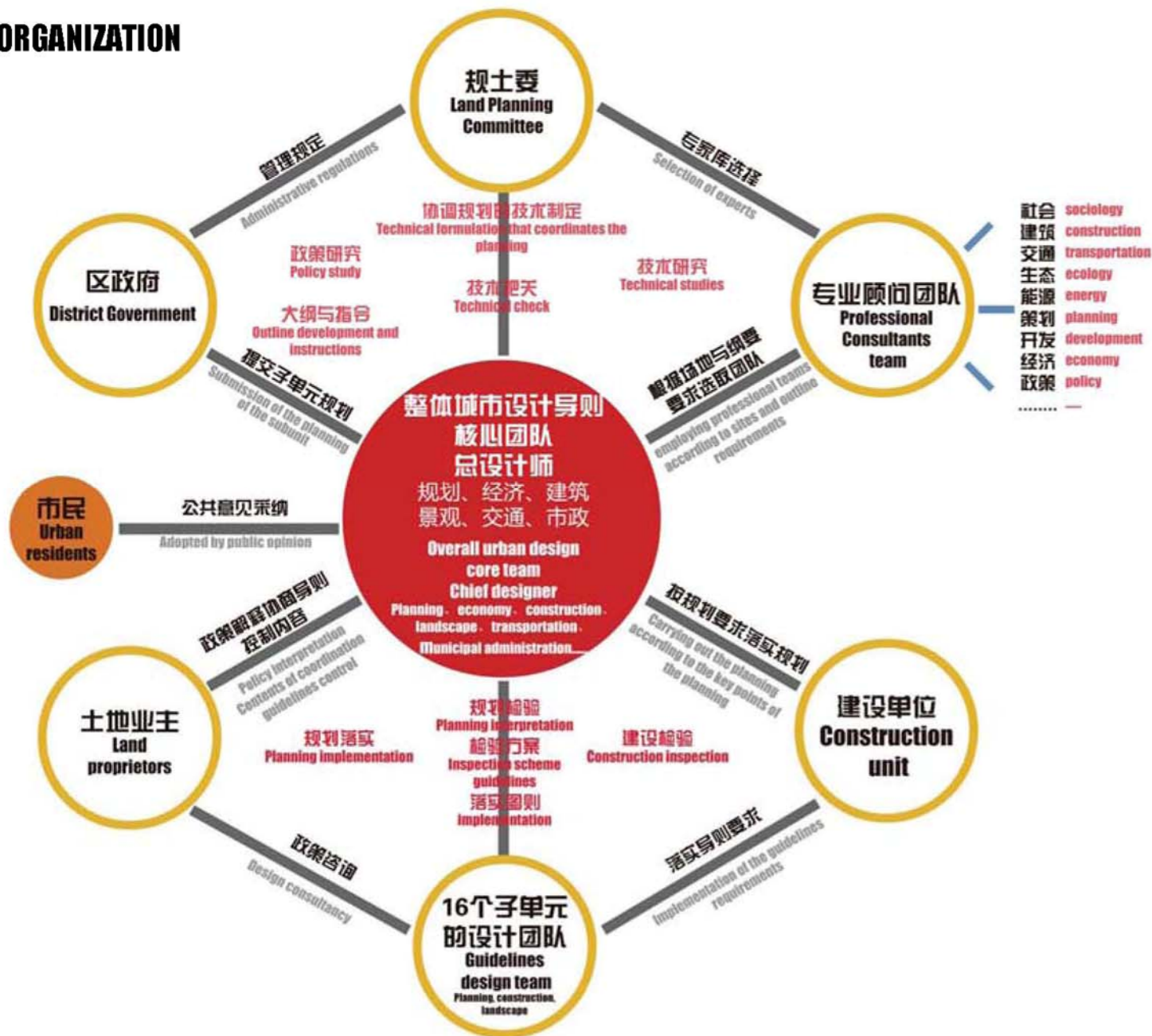
Simultaneous model



Integrated approach

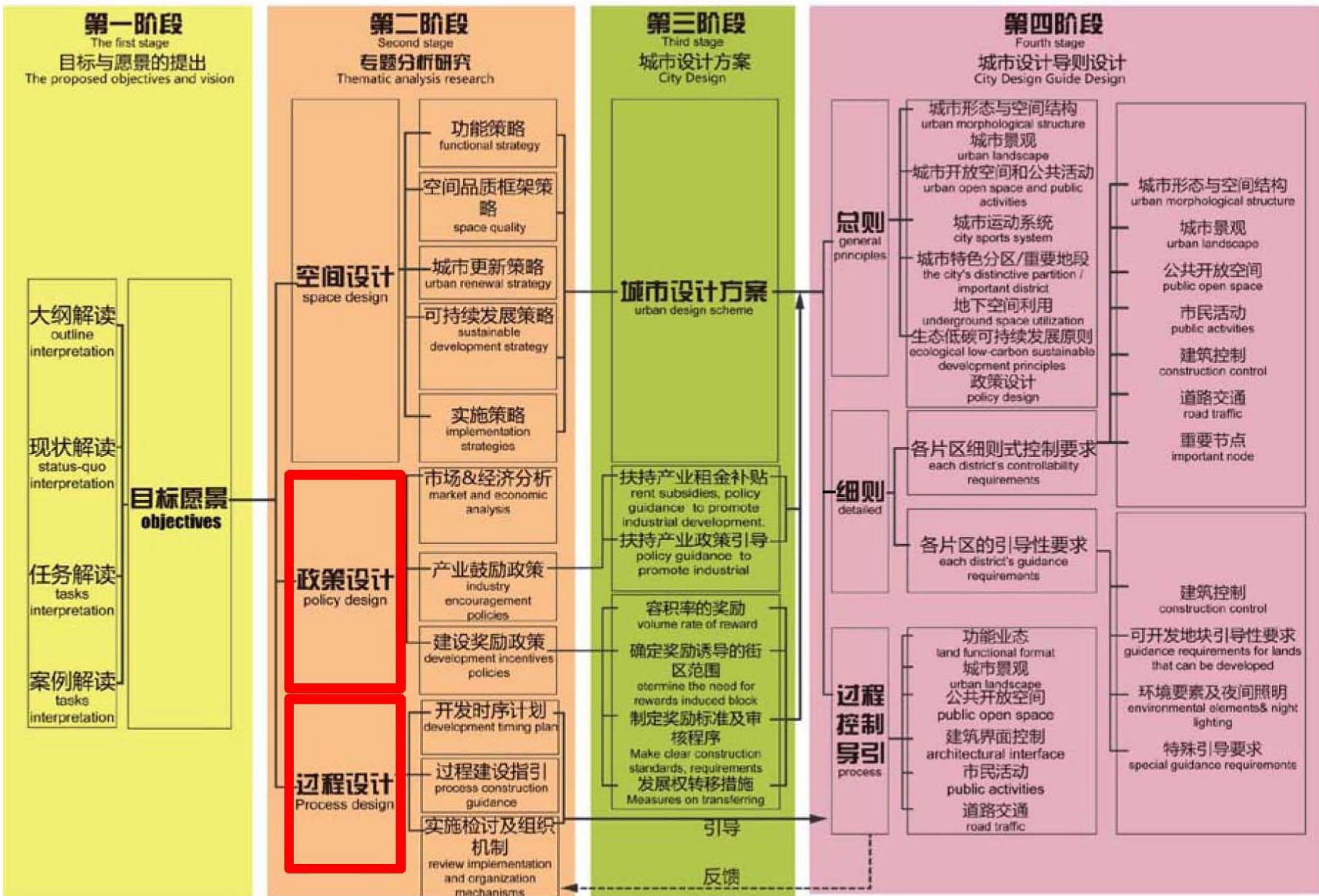
WORKING ORGANIZATION

工作組織



TECHNICAL ROUTE

技術路徑



实施策略 Implementation

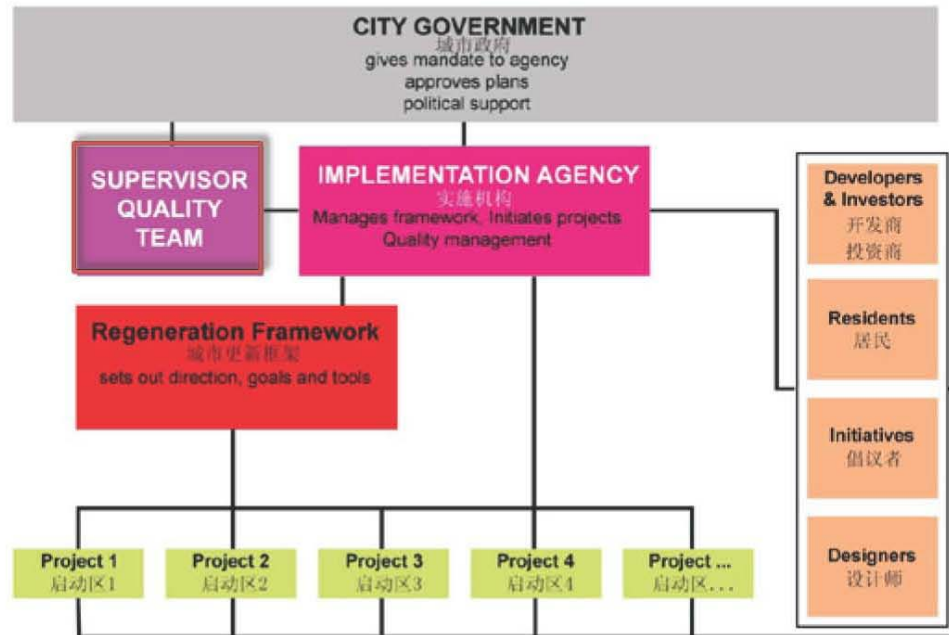
IMPLEMENTATION
PLANNING
实施规划
Structure, Implementation

Role of implementation agency and Supervisor/quality team

1. Managing framework
2. Informing the administration and the political leadership and preparing and organizing their decision-making
3. Initiating projects
4. Coordinating projects
5. Marketing and promoting the area
6. Matchmaking between the parties
7. Supporting initiatives
8. Organizing review process
9. Updating the framework
10. Eventually channeling funds and subsidies and becoming a development party
11. Legislative and planning power

执行机构——质量控管

1. 管理組織架構
2. 通知行政和政治領導層以及決策的籌備和組織
3. 啟動項目
4. 協調項目
5. 對該區域進行市場推廣
6. 雙方之間牽線搭橋
7. 支持舉措
8. 組織審查進程
9. 更新組織架構
10. 最終提供資金補貼並成為發展方
11. 具有立法和規劃的權力



Thank you