

# OSTRAVA



	Workforce	Quality of Life	Business Environment	Cost
Headquarters	5	5	5	1
R & D and Technology	5	4	4	2
Administrative/ Customer Care	4	2	3	5
Capital Intensive Production	4	2	3	3
Labor Intensive Production	2	1	2	5



## Moravskoslezský kraj 2004 – 2010

cca 1000 ha industrial zones

cca 100 bil. Kč of investment

cca 50 thousands of direct workplaces



OSTRAVA OSTRAVA

	Workforce	Quality of Life	Business Environment	Cost
Headquarters	5	5	5	1
R & D and Technology	5	4	4	2
Administrative/ Customer Care	4	2	3	5
Capital Intensive Production	4	2	3	3
Labor Intensive Production	2	1	2	5





## Moravskoslezský kraj 2006 – 2016

cca 40 thousands m2 office spaces per year

cca 1,5 bil. Kč investment per year

cca 2500 workplaces every year

cca 25 thousands direct workpl. during 10 y.



OSTRAVA OSTRAVA

	Workforce	Quality of Life	Business Environment	Cost
Headquarters	5	5	5	1
R & D and Technology	5	4	4	2
Administrative/ Customer Care	4	2	3	5
Capital Intensive Production	4	2	3	3
Labor Intensive Production	2	1	2	5



## Moravskoslezský kraj 2004 – 2014

cca 30 ha of science and technological park

cca 1 bil. Kč investment

cca 10 thousands of direct workplaces

in R&D



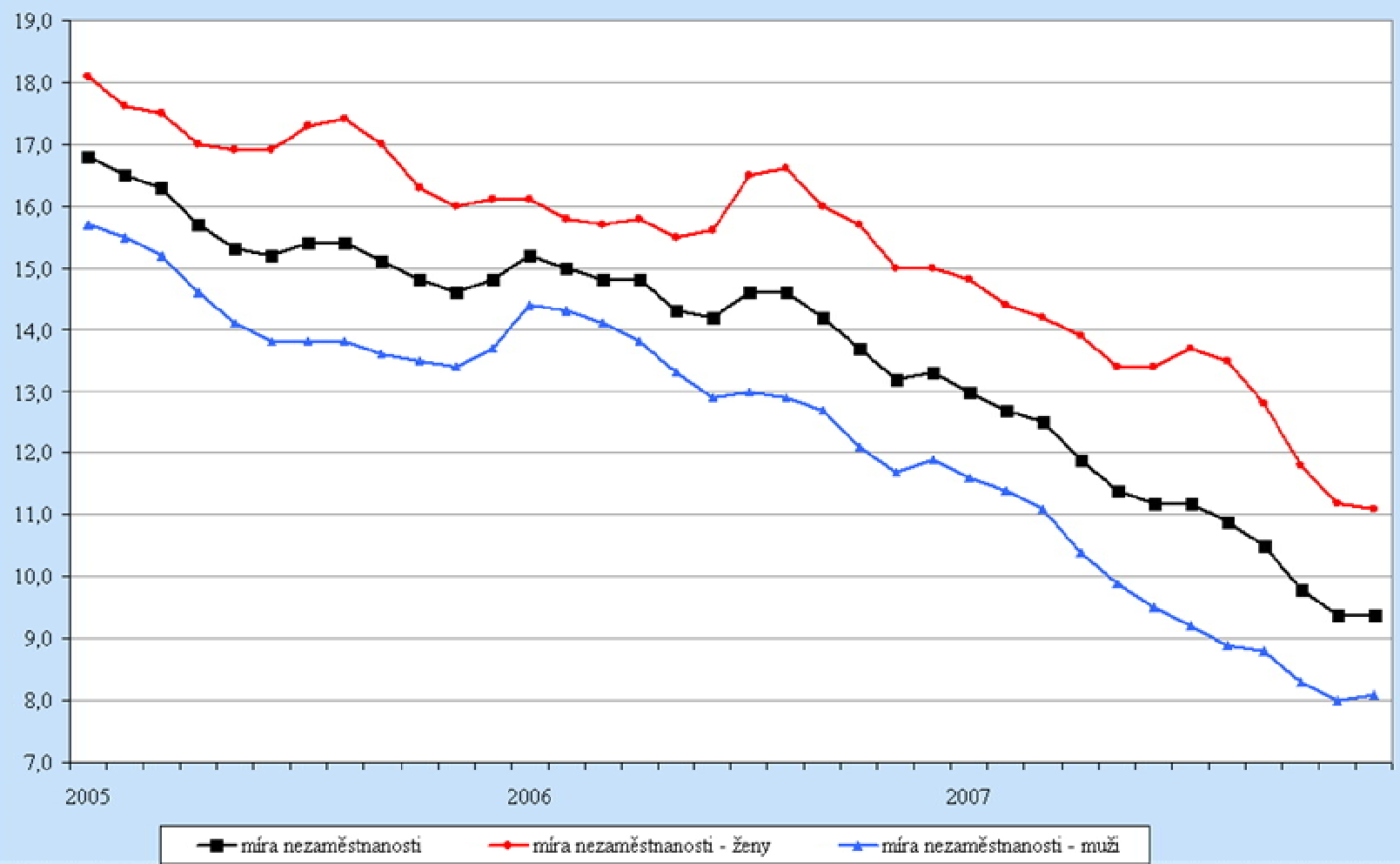
OSTRAVA OSTRAVA

	Workforce	Quality of Life	Business Environment	Cost
Headquarters	5	5	5	1
R & D and Technology	5	4	4	2
Administrative/ Customer Care	4	2	3	5
Capital Intensive Production	4	2	3	3
Labor Intensive Production	2	1	2	5

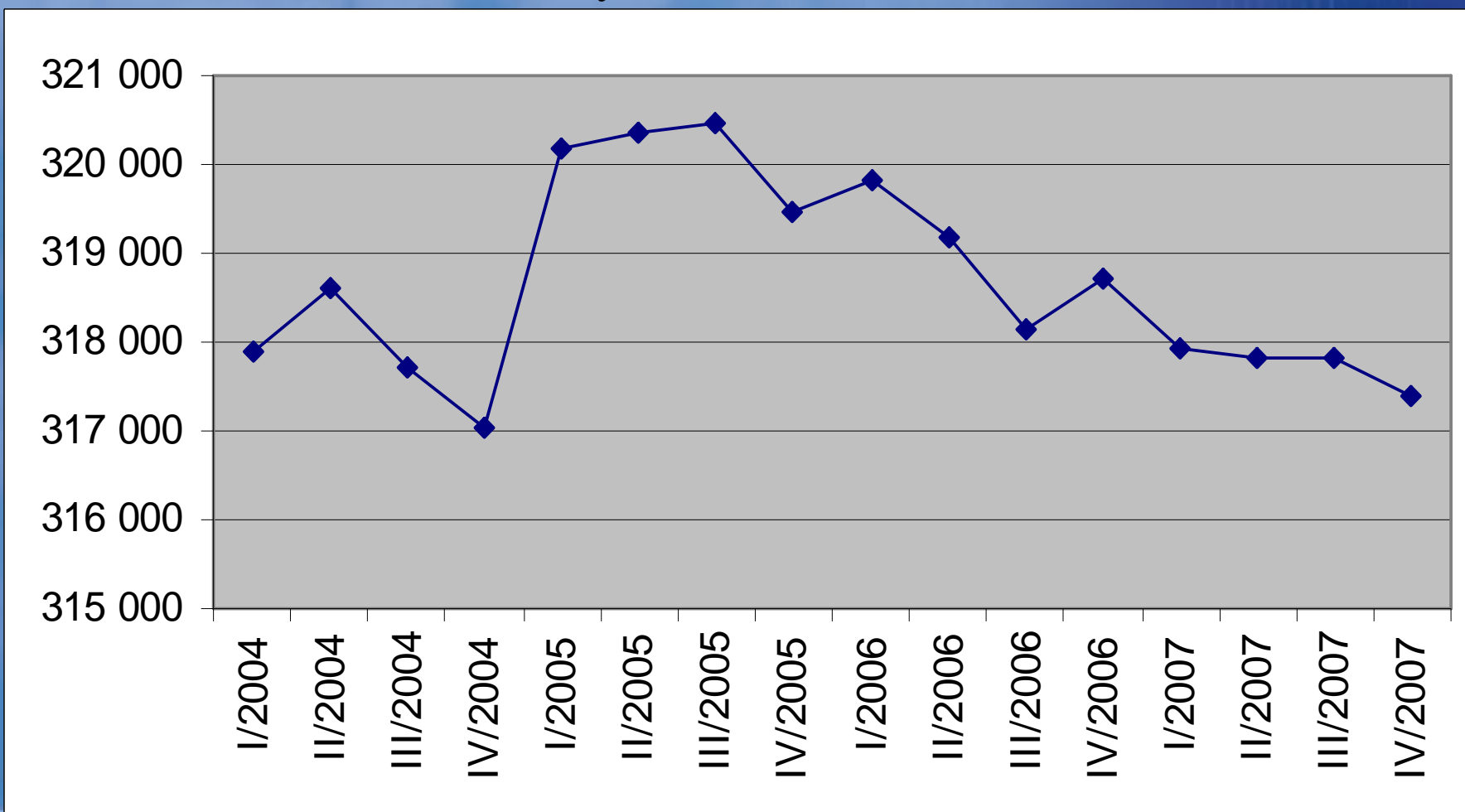




### Vývoj míry nezaměstnanosti od roku 2005

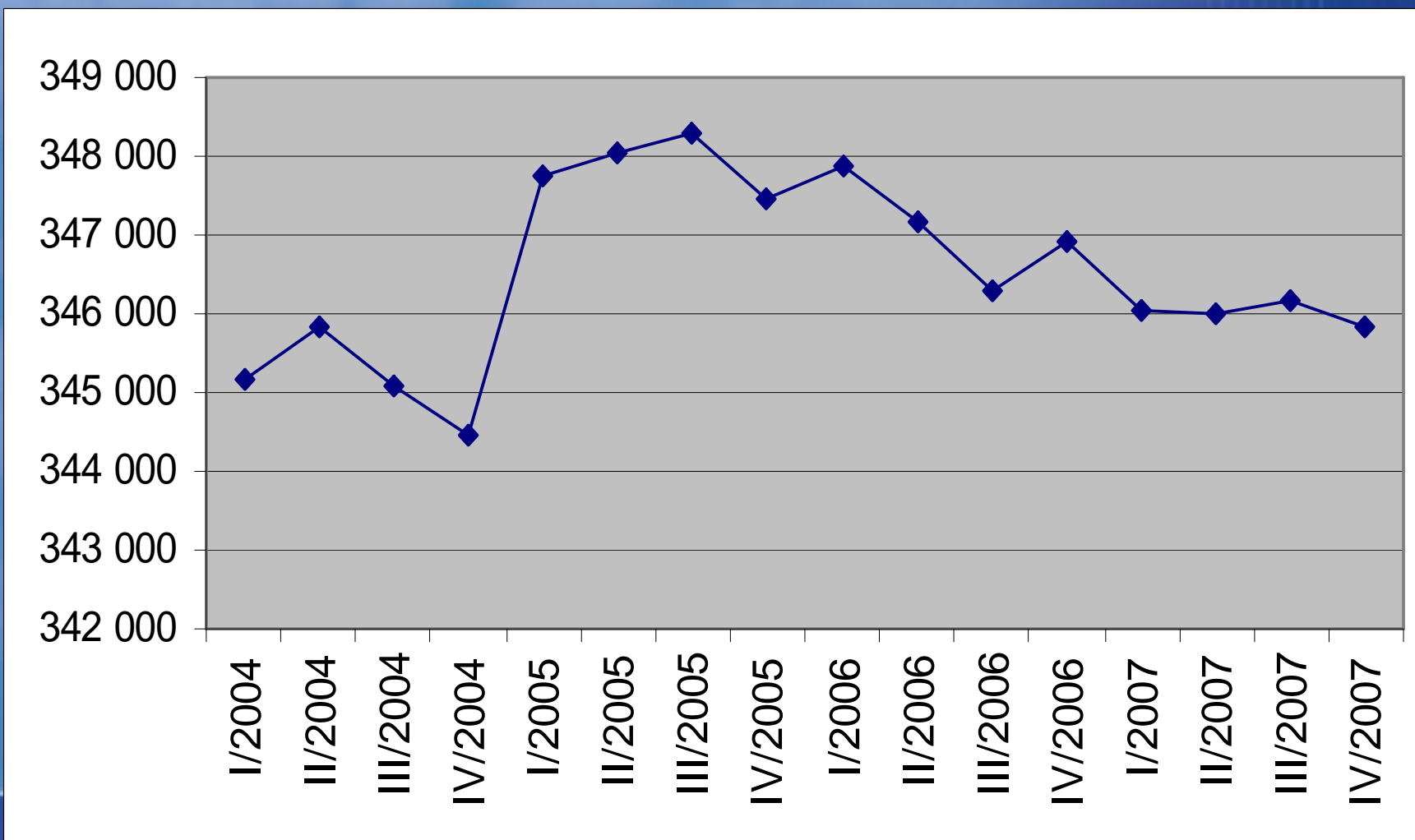


## Počet obyvatel v Ostravě



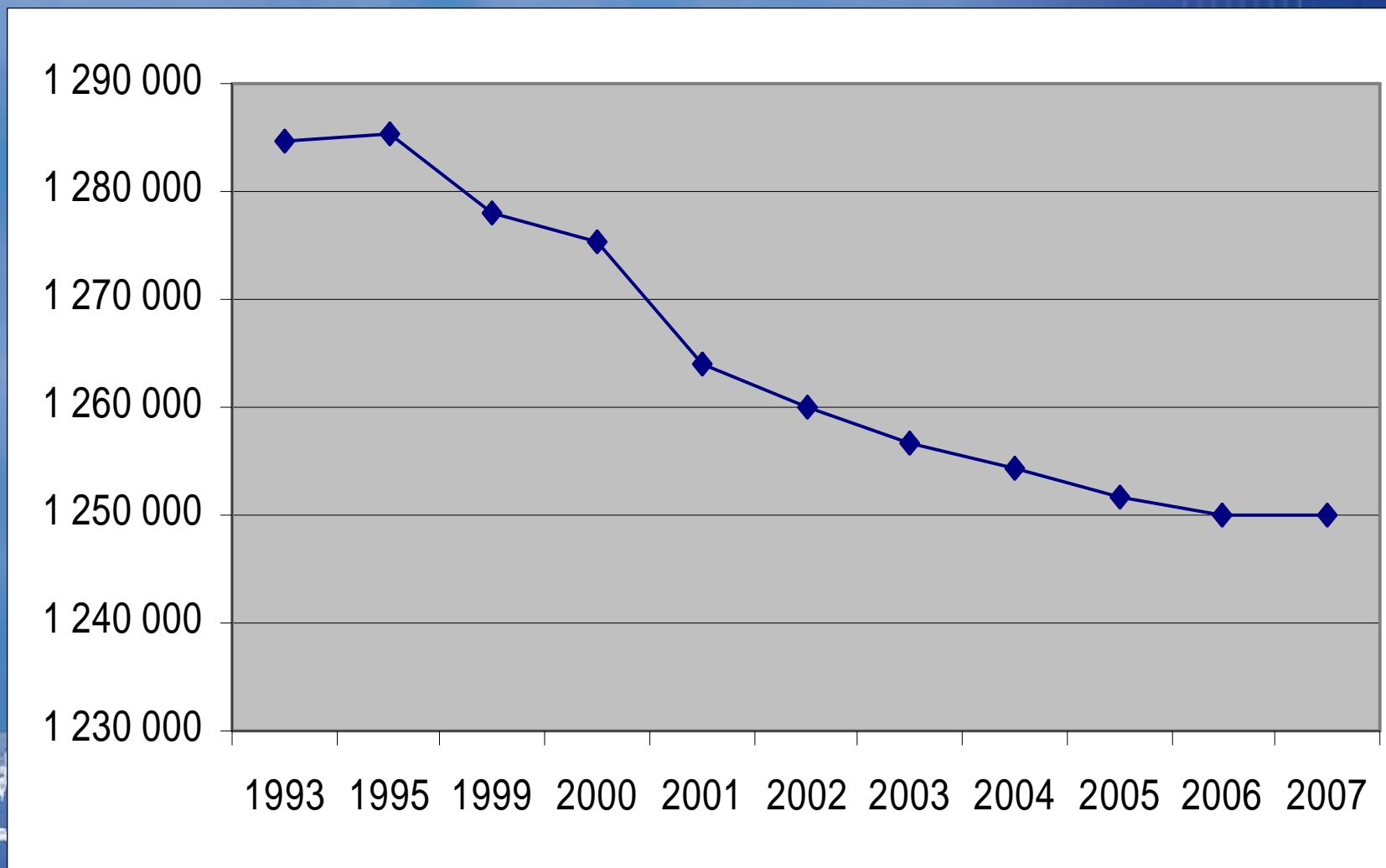
OSTRAVA OSTRAVA

## Počet obyvatel v Ostravě včetně „trojkových obcí“



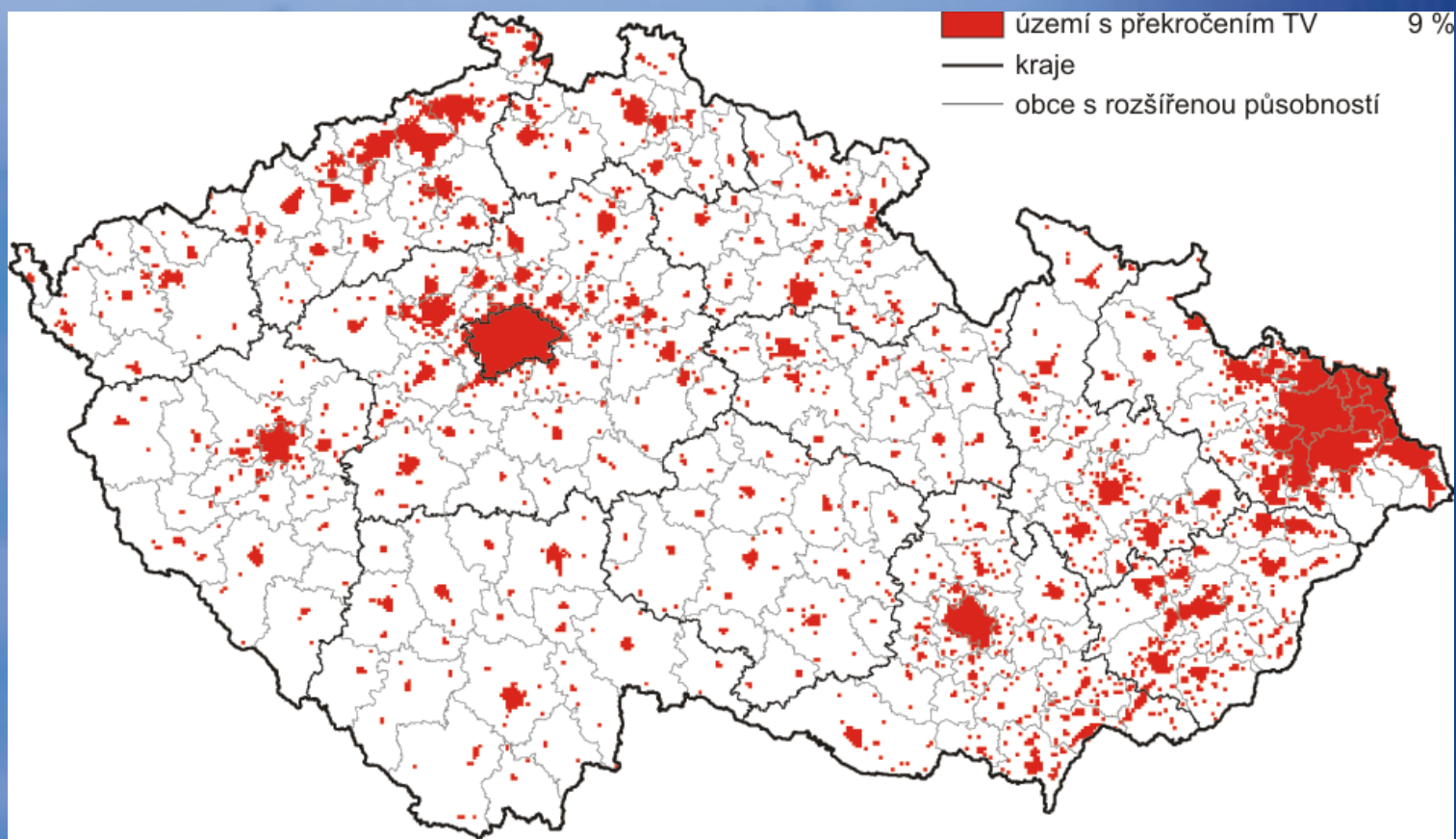
OSTRAVA OSTRAVA

## Počet obyvatel MSK



OSTRAVA OSTRAVA





Vyznačení oblastí se zhoršenou kvalitou ovzduší vzhledem k cílovým emisním limitům pro ochranu zdraví, bez zahrnutí přízemního ozonu, 2006



OSTRAVA OSTRAVA

Thank you for your attention



OSTRAVA OSTRAVA