
The logo consists of the letters 'T' and 'E' in a dark blue, serif font. A small gold dot is positioned between the two letters, centered vertically.

PREMIUM
DEVELOPMENT



BARRANDOVSKÁ
ZAHŘADA

BARRANDOVSKÁ ZAHRADA



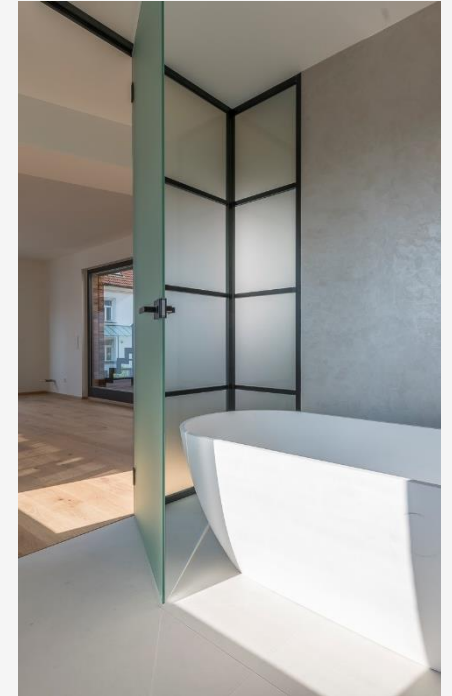
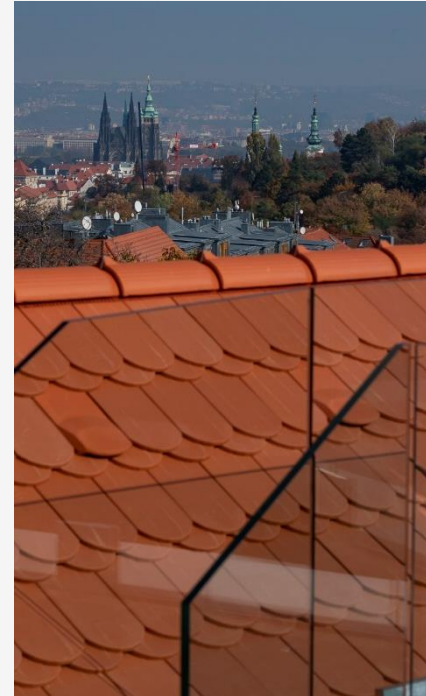
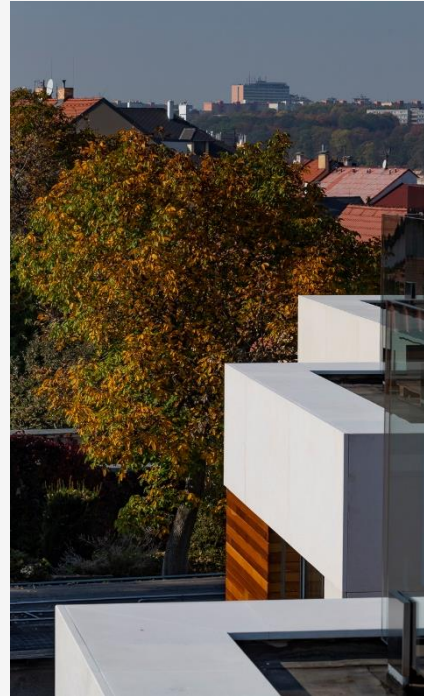
PRAHA 5
Barrandov





TRUHLÁRNA

TRUHLÁRNA



P r a h a 6

Břevnov

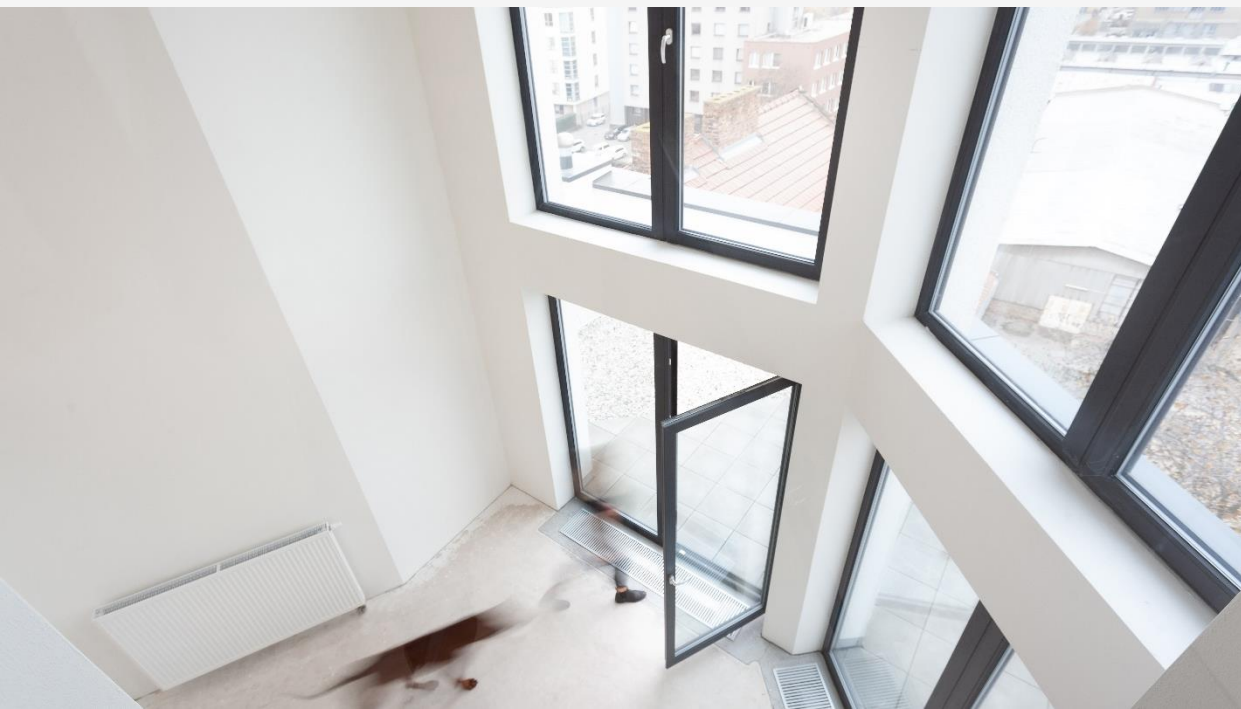


MILHOUSE



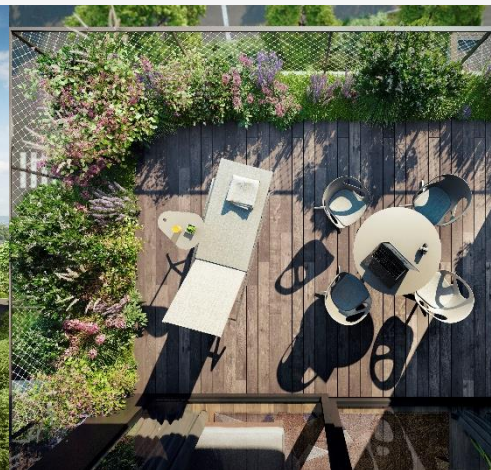
MILHOUSE

Brno - střed





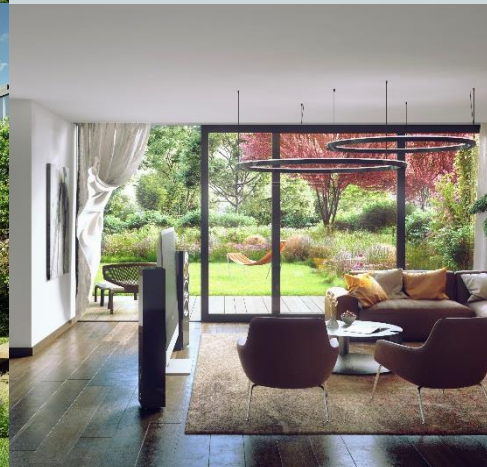
SAKURA



P r a h a 5

Košíře

S A K U R A





BLER IOT

BLER IOT



Praha 9

Kbely





BARRANDEZ - VOUS



BARRANDEZ-VOUS

Praha 5

Barrandov

